

OFFICE OF THE EXECUTIVE ENGINEER, PWD DN OSIAN

No. 2514

Date 18/3/21

The District Education Officer
(Secondary Education II)
Jodhpur

Subject : Regarding Safety Certificate of Educational Institute Swami
Vivekanand Govt. Model School at Osian

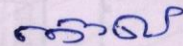
Ref : Principal vide letter No. 1528 date 17.03.2021

Sir.

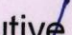
It is to inform that above building has been inspected by Assistant Engineer PWD Sub Dn. I Osian on Dated 18.03.2021 on the basis of formal request by the Principal Swami Vivekanand Govt. Model School & affidavit furnished by owner. It is to certify that this Building is safe for School activities as per mark on map by Assistant Engineer.

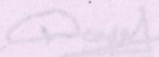
This Certificate is valid for a period 3 (Three) Year i.e. only up to 17.03.2024 subject to regular upkeep and satisfactory annual maintenance by School owner.

Note : This certificate well stand void automatically, if the building is used for any other purpose other than the school activities at any time during the year.


Executive Engineer
PWD Dn Osian
Date

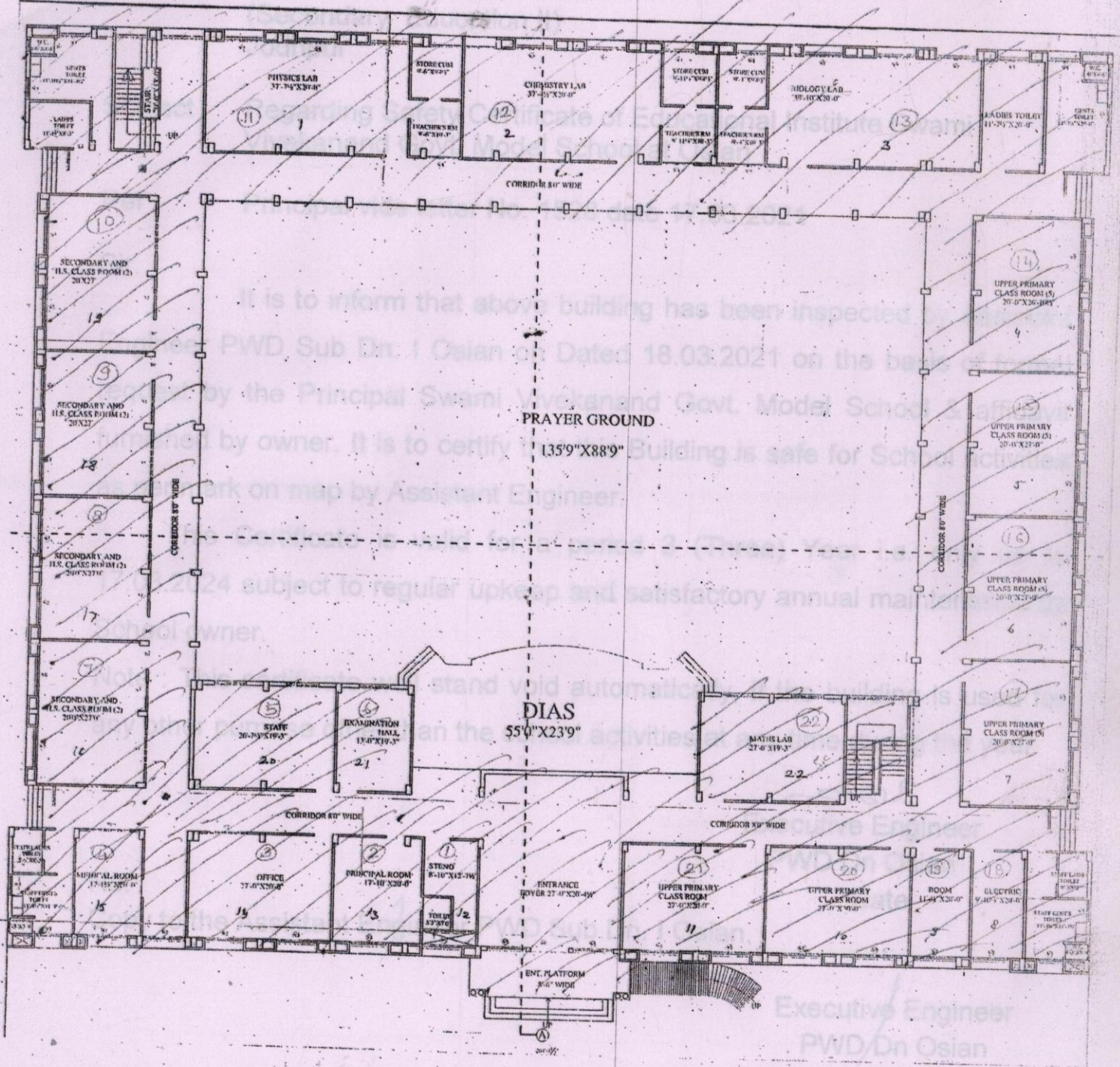
No. Copy to the Assistant Engineer PWD Sub Dn. I Osian.


Executive Engineer
PWD Dn Osian

*-The school by checked time
is safe for school activity.*

Assistant Engineer
P.W.D. Sub Div. I Osian


Principal
A.V. Govt. Model School
Osian

The District Education Officer



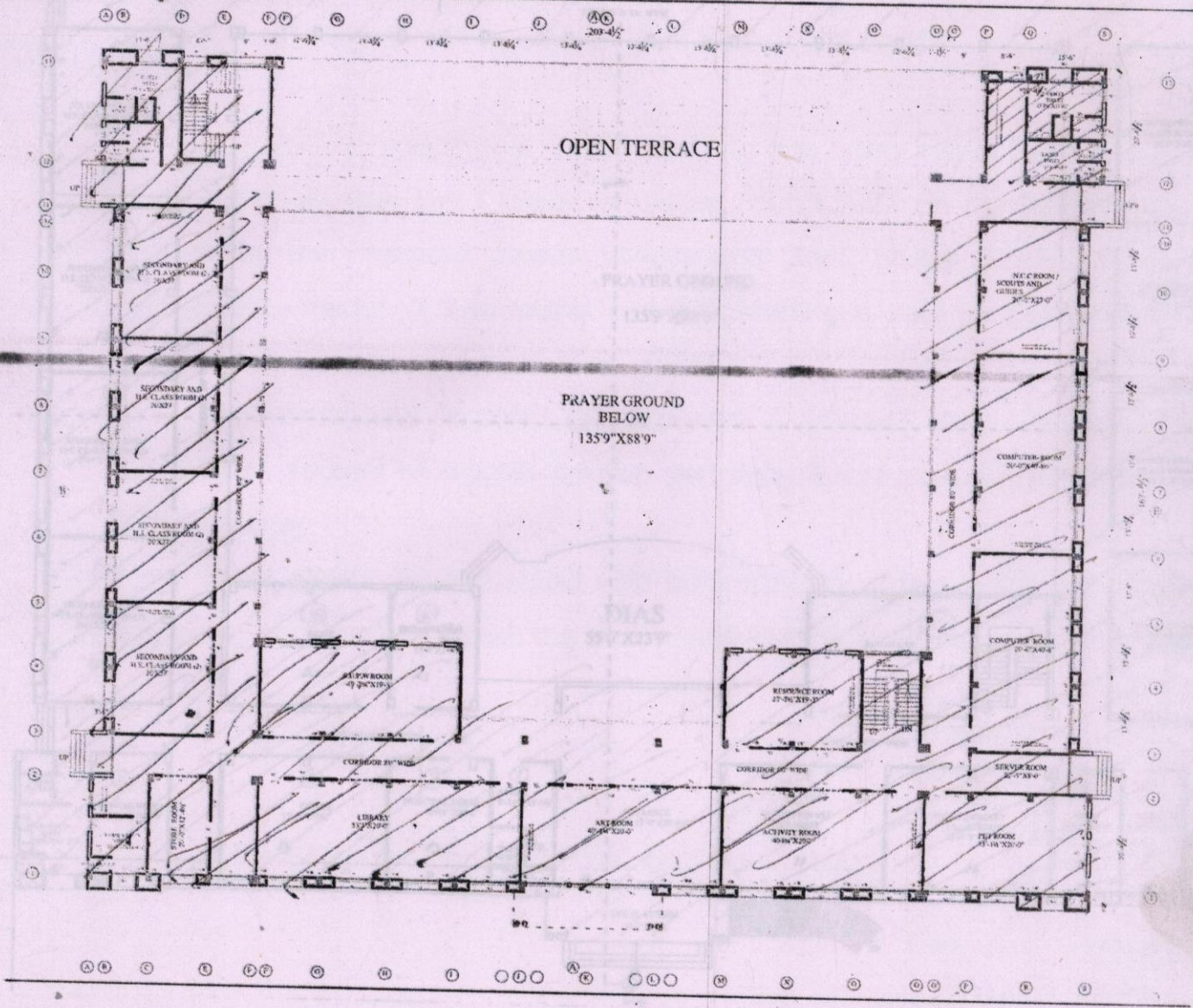
GROUND FLOOR BUILT-UP AREA:- 20766.00SQ FT.
 FIRST FLOOR BUILT-UP AREA:- 16156.00SQ FT.
 TOTAL BUILT-UP AREA:- 36922.00SQ FT.

SQ. METRE - 3430.16

Area shown by Hatched line
 is safe for school activity.

Devgul
 Assistant Engineer
 P.W.D. Sub Div. I Osian

Princip
 Principal
 S.V. Govt. Model School
 Osian (Jodhpur)



- Area shown by Hatched line is safe for school activity

Deepal
Assistant Engineer
P.W.D. Sub Div. I Osian

Frost Flow

Prin
Principal
S.V. Govt. Model School
Osian (Jodhpur)